

David Olson

Sultan Mehmed Sarki

Bimen & Co.

Gelsu toy ya *rei le ha*


Handwritten musical notation on a five-line staff. The notation consists of several measures of music with notes and rests. Below the staff, the lyrics "u ca him kus" and "lara yildy" are written in a cursive script.

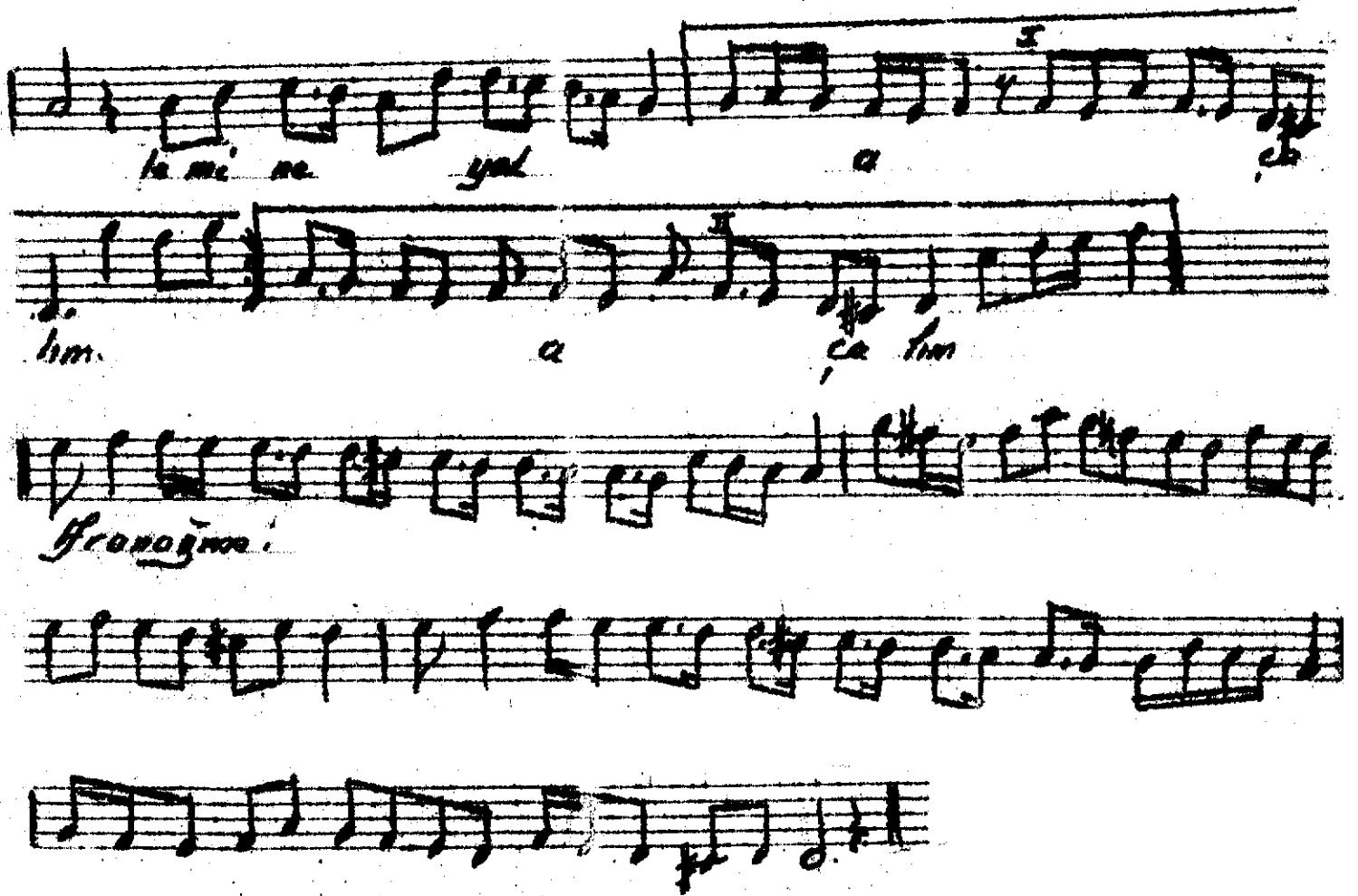
loro gül ler se celim

Handwritten musical notation on a five-line staff. The notation includes eighth and sixteenth notes, rests, and a double bar line. There are handwritten annotations 'sa' and 'im' below the staff, and a small 'x' above the staff.

Geze lim her
terafekut

Handwritten musical notation for the phrase "Bu sefo yi bu la". The notation is on a single staff with a key signature of one sharp (F#) and a 4/4 time signature. The notes are: Bu (quarter), se (quarter), fo (quarter), yi (quarter), bu (quarter), la (quarter). The lyrics are written below the notes.





Gel Su toyyara ile kâti kâderden Kaçalım
Uçalım Kuslara, gıdıklara goller soyalım
Gezelim her Fereft Rütbe Sofayı bulalım.
Sen bir zeuk-i terak olmine gel açalım.

- 2 -

Gidelim öyk bir iklimdeki ay ruhi ruvau
Orada olmasın olani figan jashı haxon
Olalım bir su tenarında sen ile pün han
Burada durmayalım gel güzelim gel Kaçalım.